

FLOOR PLAN
1ST FLOOR

AVAILABLE SPACE

RETAIL 3
3,734 SF

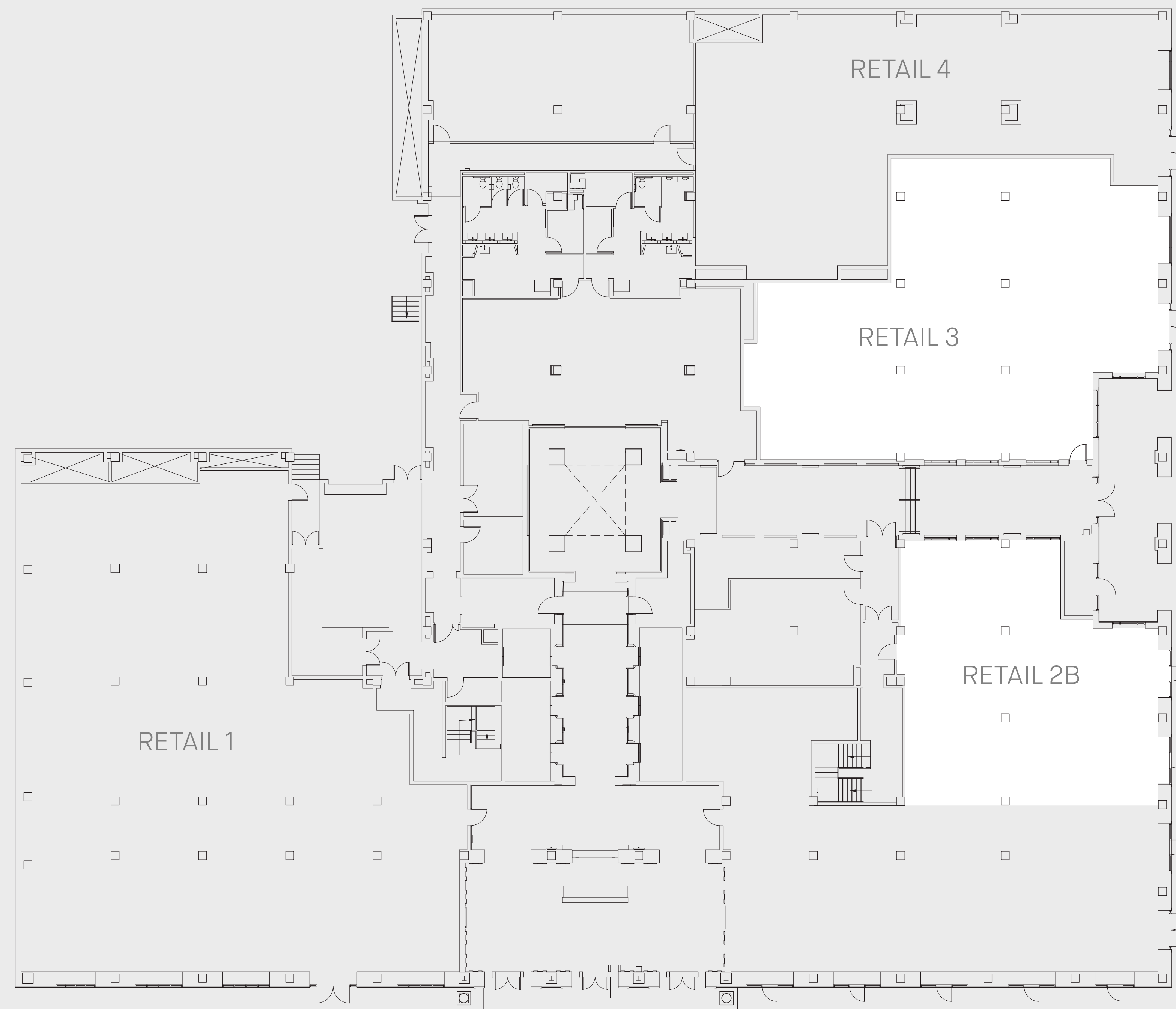
RETAIL 2B
2,229 SF

K STREET ADDRESS

OVER 77,000
DAILY FOOT TRAFFIC

98 WALK SCORE

STACKING PLAN →



K STREET

15TH STREET

N >

□ AVAILABLE SPACE

□ CURRENTLY OCCUPIED

FLOOR PLAN
3RD FLOOR

AVAILABLE SPACE

SUITE 300
5,700 SF

SUITE 375
5,411 SF

SUITE 350
4,306 SF

SUITE 325
2,445 SF

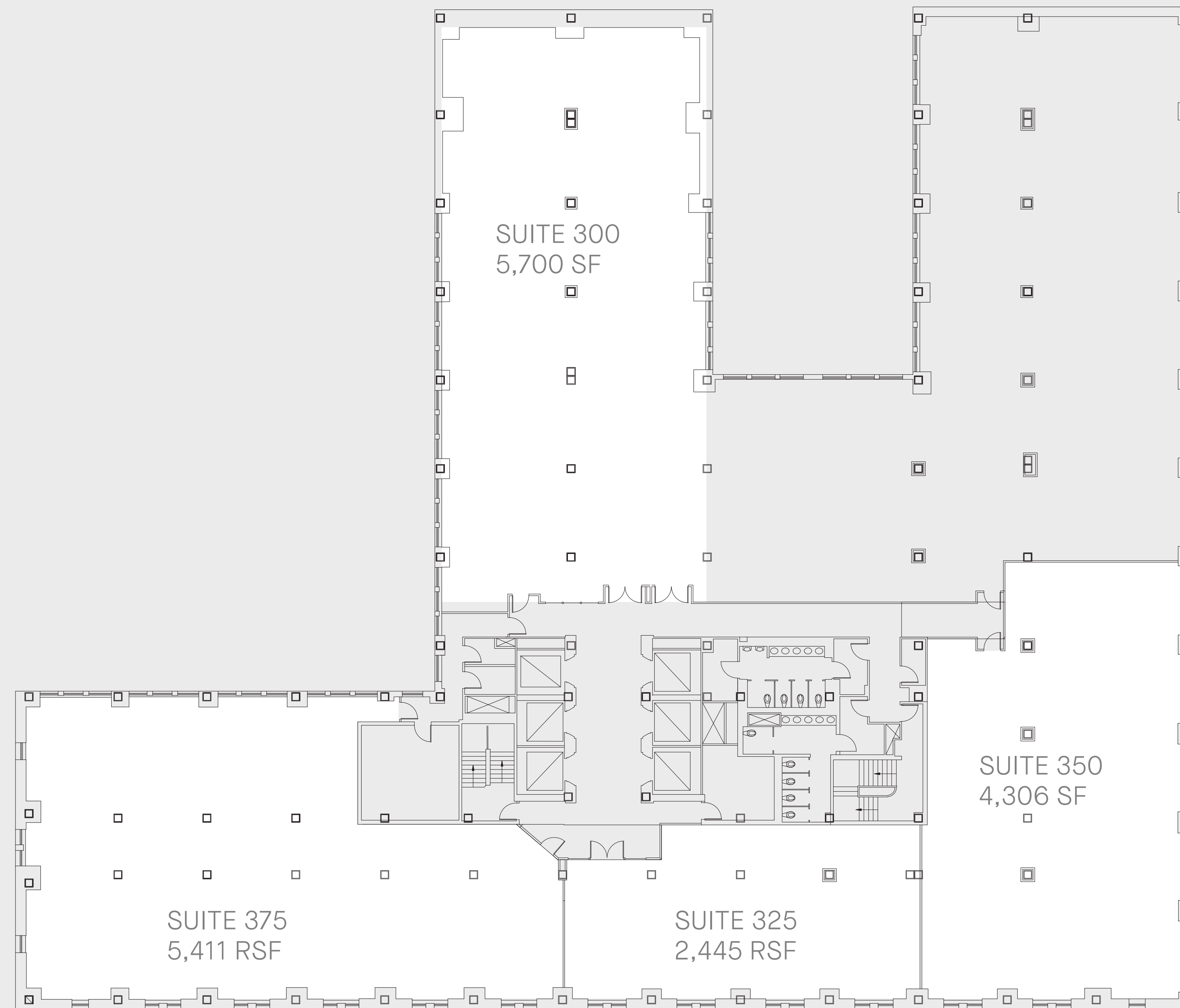
K STREET VIEWS

SPACE AND ENERGY
SAVING HVAC UPGRADES

FULLY BUILT-OUT HIGH-END
SUITES IN MOVE-IN
READY CONDITION

RENOVATED COMMON
AREA RESTROOMS

[STACKING PLAN](#) →



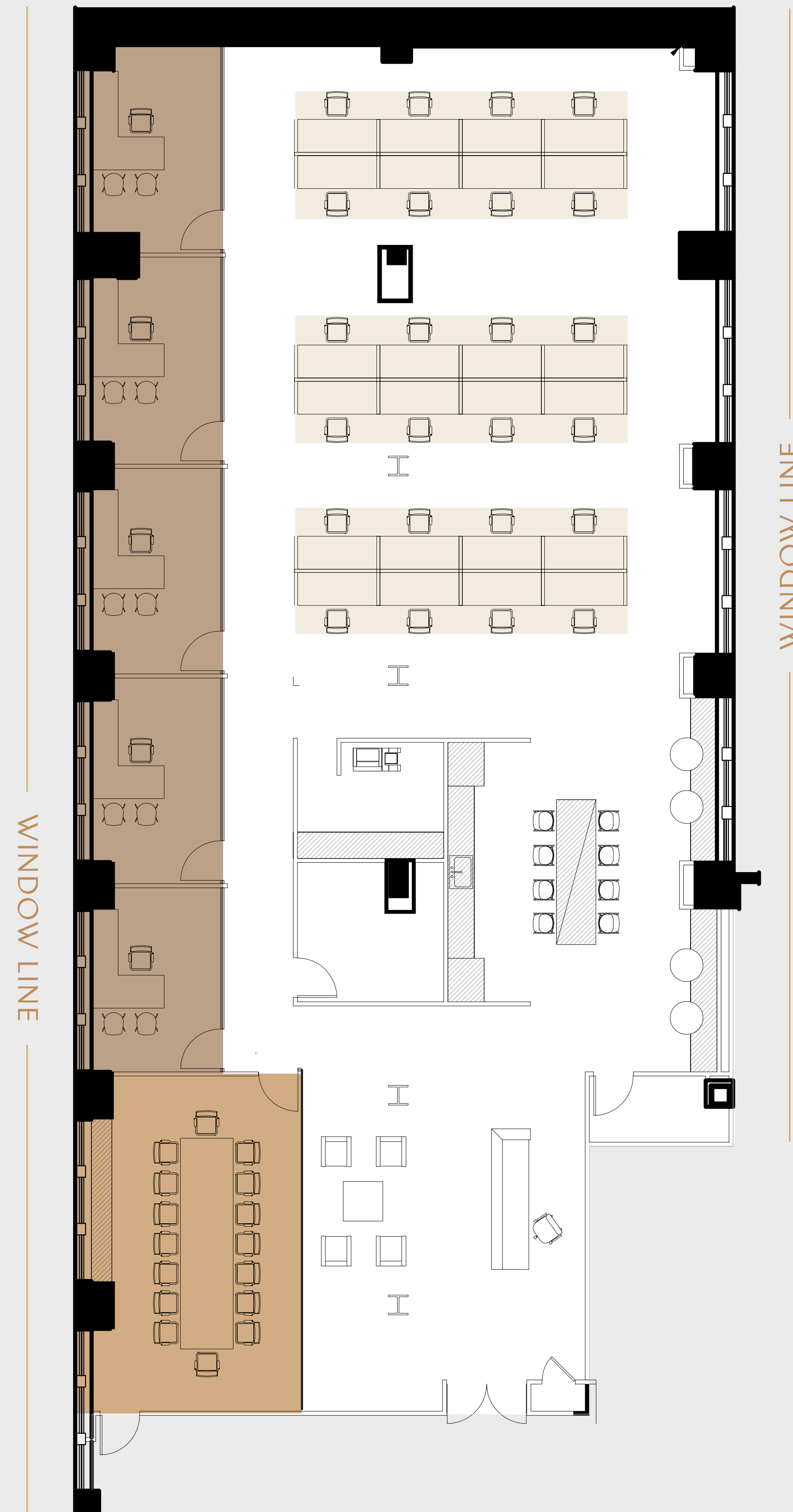
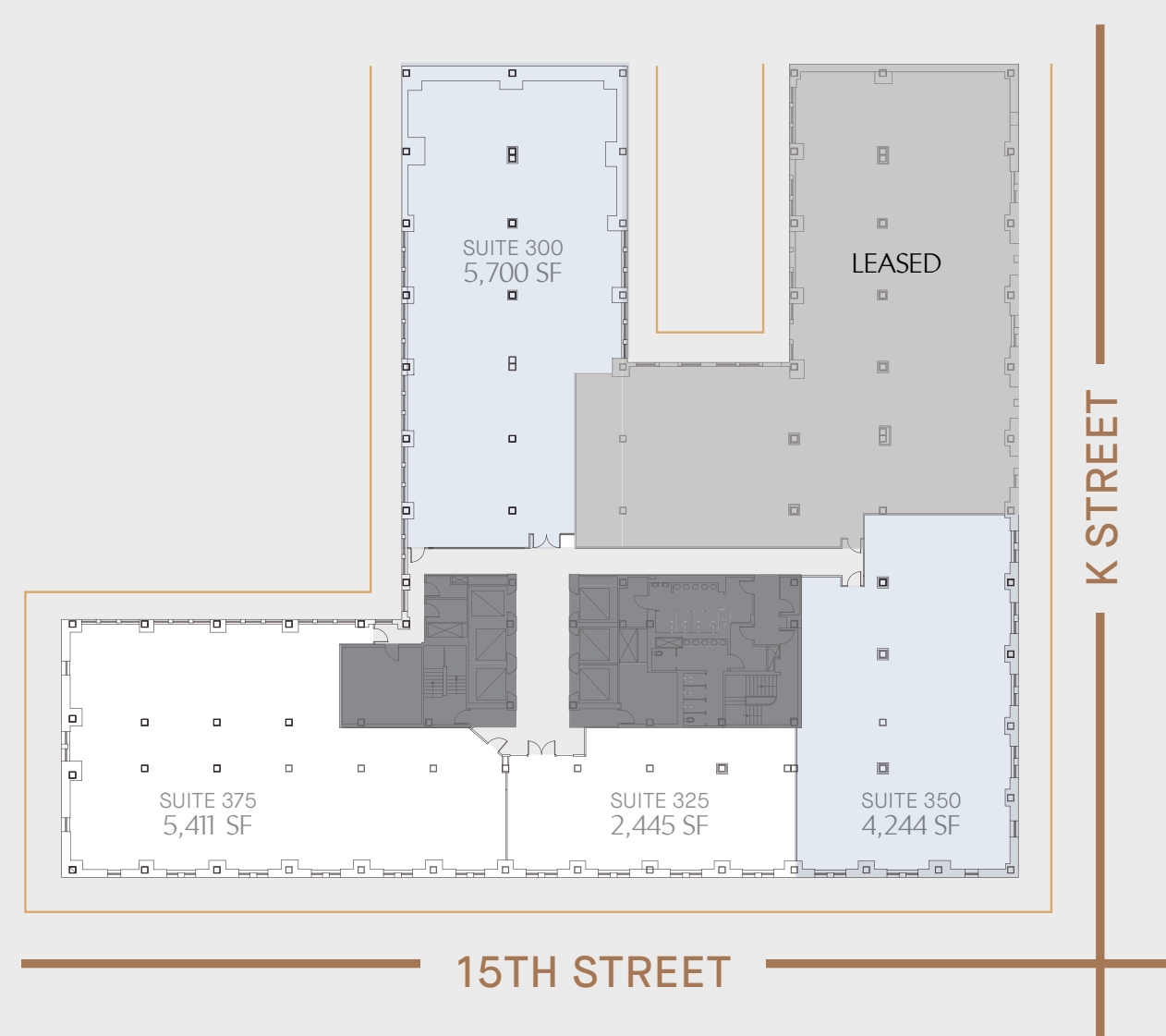
- N >
- AVAILABLE SPACE
 - CURRENTLY OCCUPIED

FLOORPLAN

SUITE 300 – SPEC SUITE

AVAILABLE SPACE
5,700 SF

- 1 Conference Room ●
- 5 Offices ●
- 24 Workstations ●



[STACKING PLAN →](#)

[VIRTUAL TOUR →](#)

FLOOR PLAN

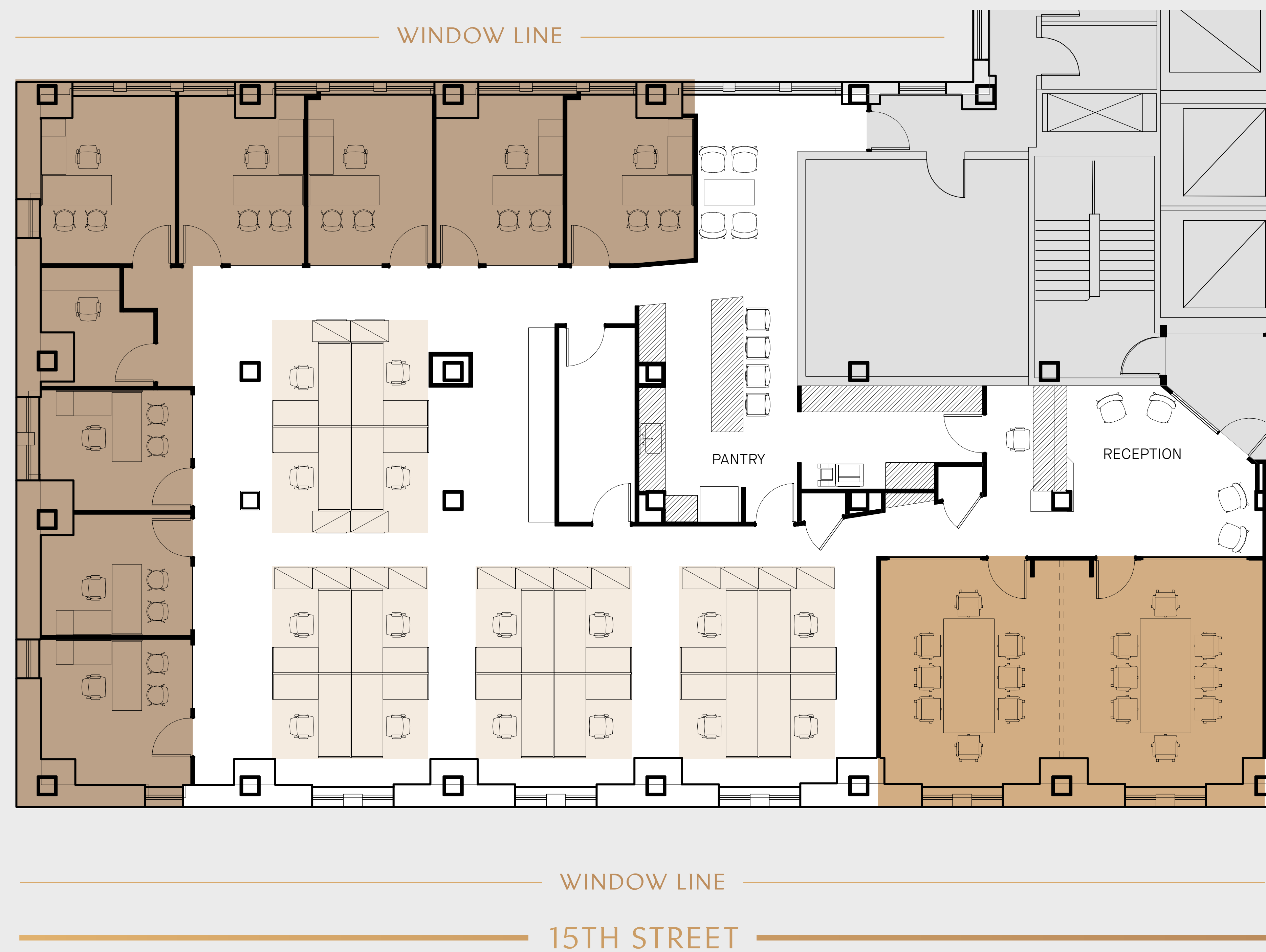
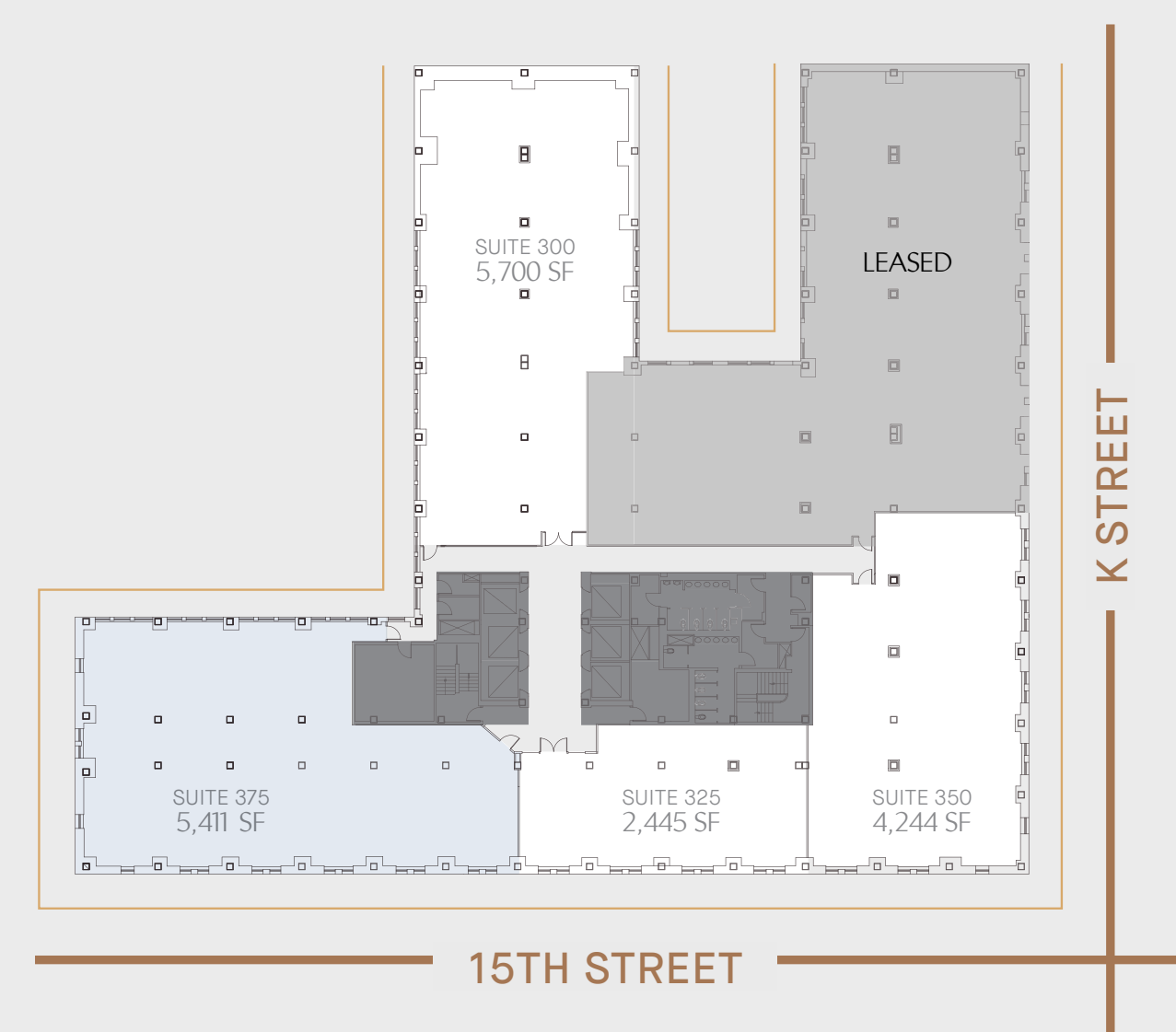
SUITE 375 – AS BUILT

AVAILABLE SPACE

5,411 SF

- 1 Conference Room ●
- 4 Offices ●
- 6 Workstations ●

[STACKING PLAN →](#)



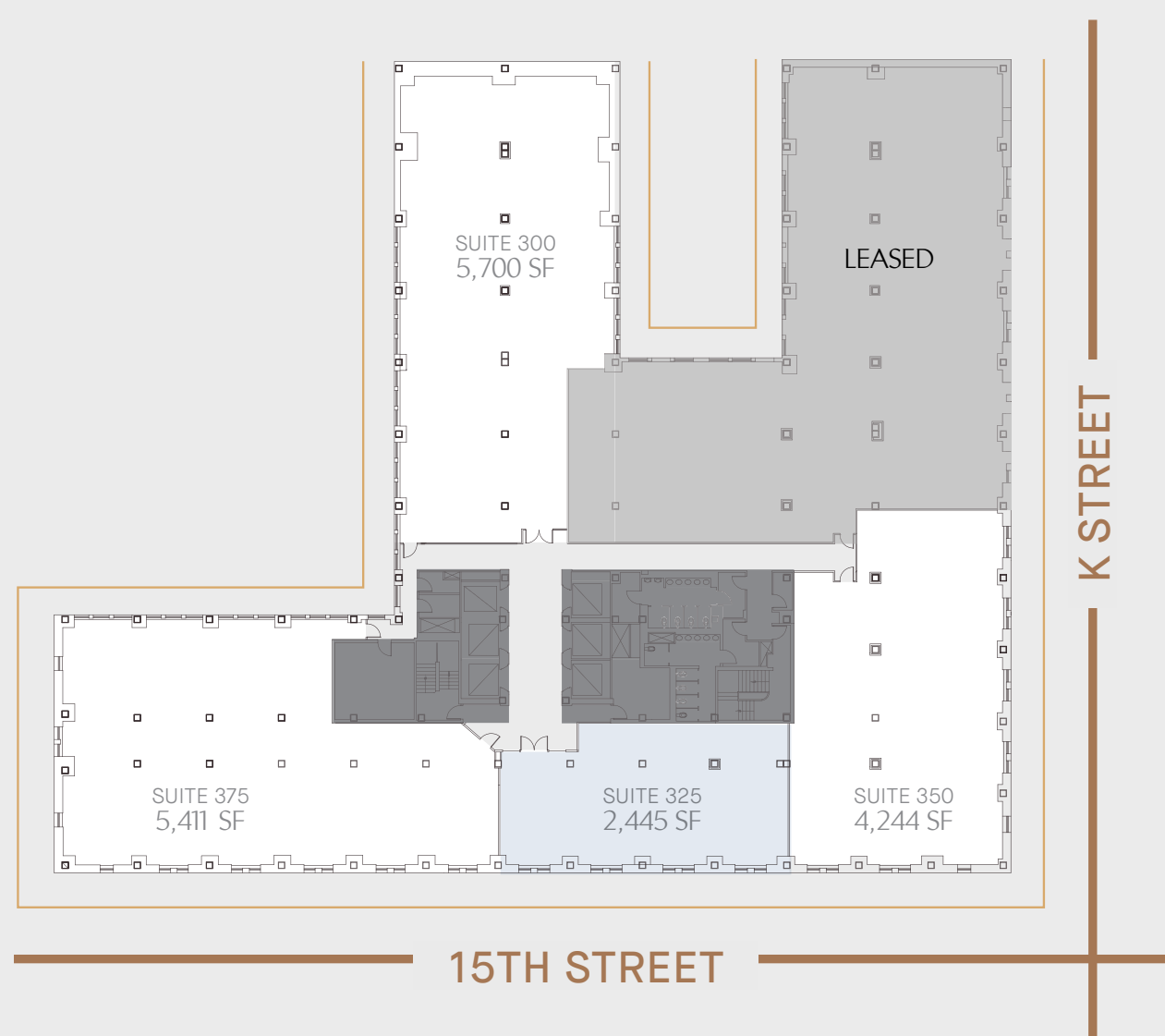
FLOORPLAN

SUITE 325 – AS BUILT

AVAILABLE SPACE
2,445 SF

[STACKING PLAN →](#)

- 2 Conference Rooms ●
- 9 Offices ●
- 16 Workstations ●

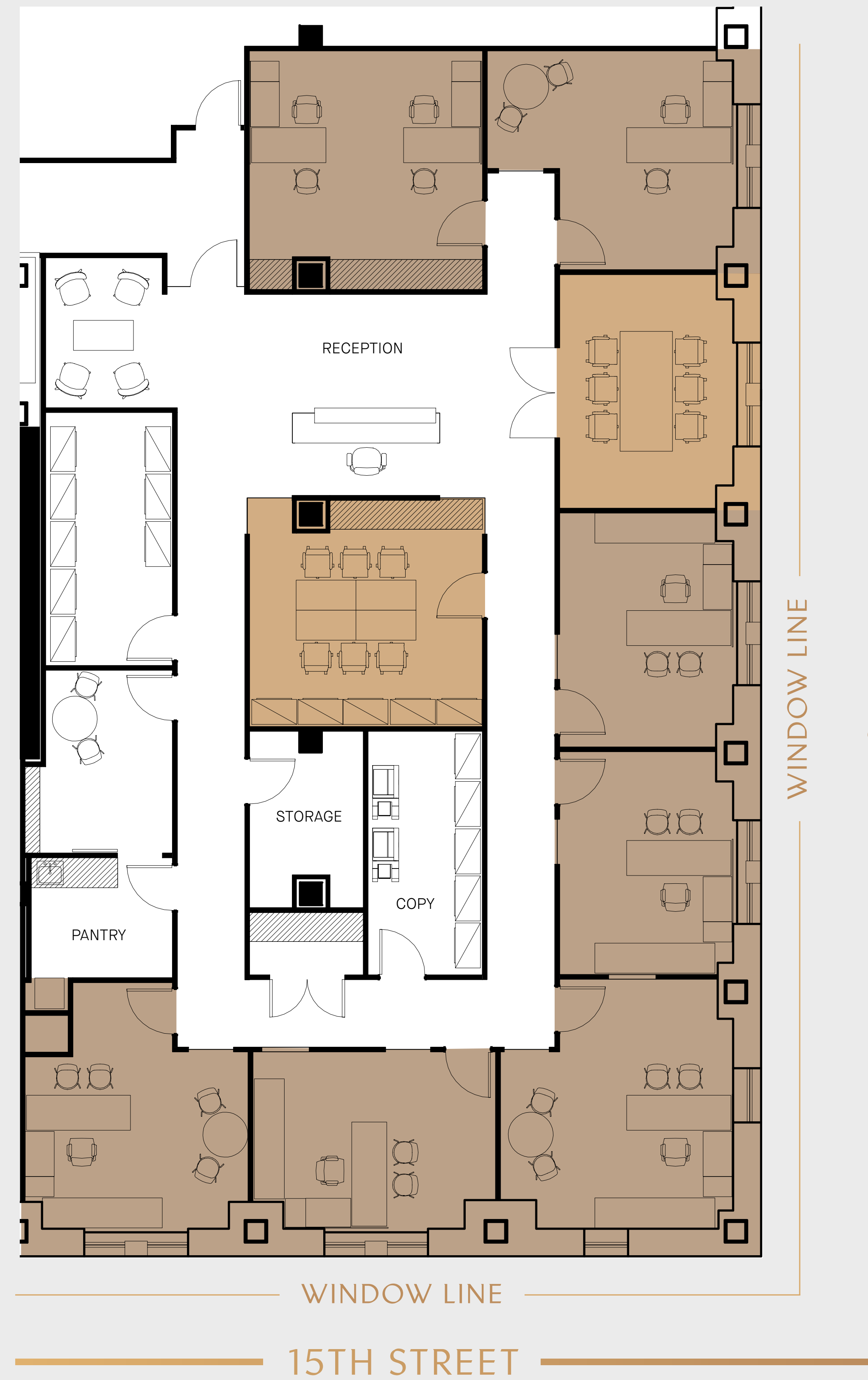
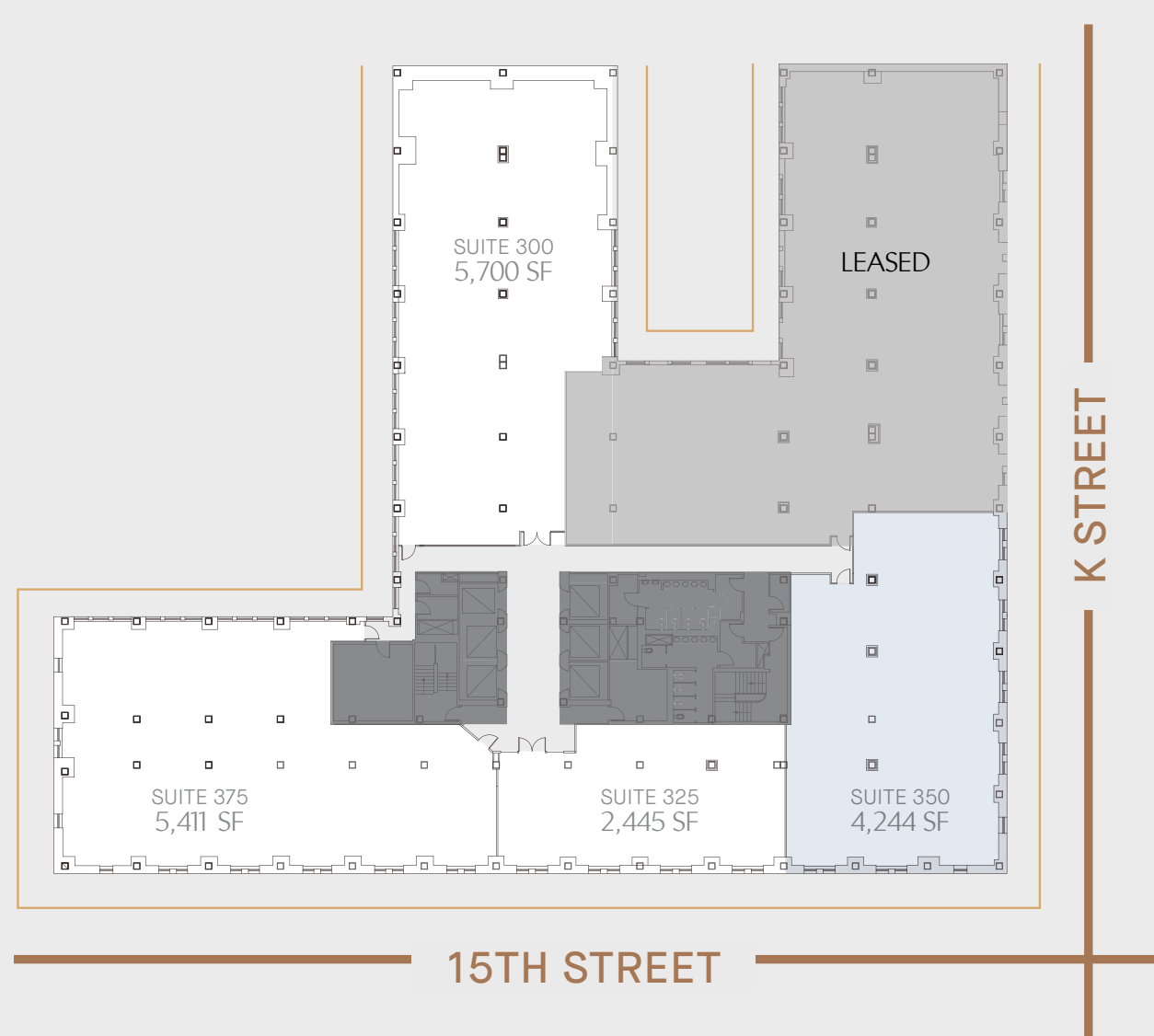


FLOORPLAN

SUITE 350-AS BUILT

AVAILABLE SPACE
4,306 SF

- 2 Conference Rooms ●
- 7 Offices ●



[STACKING PLAN](#) →

FLOOR PLAN

8TH FLOOR – TEST FIT

AVAILABLE SPACES

SUITE 850
**HYPOTHETICAL
 OFFICE INTENSIVE
 13,391 SF**

- 4 Conference Room ●
- 18 Offices ●
- 28 Workstations ●

SUITE 875
**HYPOTHETICAL
 OFFICE INTENSIVE
 4,155 SF**

- 2 Conference Room ●
- 6 Offices ●
- 12 Workstations ●



[STACKING PLAN →](#)

[VIRTUAL TOUR →](#)

K STREET

15TH STREET

13'+ SLAB-TO-SLAB
 CEILING HEIGHTS

FLOOR PLAN

8TH FLOOR – TEST FIT

AVAILABLE SPACES

SUITE 850

**HYPOTHETICAL
MIXED PLAN
13,391 SF**

- 4 Conference Room ●
- 10 Offices ●
- 68 Workstations ●

SUITE 875

**HYPOTHETICAL
MIXED PLAN
4,155 SF**

- 2 Conference Room ●
- 3 Offices ●
- 24 Workstations ●



[STACKING PLAN →](#)

[VIRTUAL TOUR →](#)

K STREET

15TH STREET

13'+ SLAB-TO-SLAB
CEILING HEIGHTS